

THE DYSLEXIA CENTER

Engaging bright minds that learn differently



Newsletter

January 2009

Happy 2009! As we welcome a new year at The Dyslexia Center, we are proud to look back on 2008 and share the accomplishments of our second year of operations.

Last year we made great gains in increasing the number of students who have access to effective reading instruction, both in our Center and particularly through the more than 200 teachers that we have trained. Thanks to these teachers, well over 1,000 Colorado students are receiving effective instruction in reading this year!

In July, 2008, five TDC trainees became certified through the Academic Language Therapy Association (ALTA) as Associate Academic Language Teachers, becoming the first to receive this national certification for training held within the state of Colorado. We are so proud of them, and wish them well as they make a difference in the lives of many students with dyslexia.

TDC is happy to welcome two new board members to our outstanding Board of Directors. Bruce MacHaffie, M.D., a developmental pediatrician, and Charlotte Mendoza, Ed.D., former Chair of the Department of Education at Colorado College. We welcome their expertise and thank them for their support! We also welcome our new associates: Theresa Gisi, Ph.D., NCSP, who brings her expertise as a clinical psychologist and neuropsychologist; and Cathy Daly, M.A., a West Point graduate whom we welcome as our Office Manager.

At the state level, 2008 was an important year for dyslexia. In May, Governor Bill Ritter signed House Bill 1223 requiring school districts to identify and treat dyslexia. In October, 2008, we recognized the bill sponsor, Representative Michael Merrifield, for his dedication to students with dyslexia. Joining us in the Open House celebration were Lt.



LEAD students and Lt. Governor O'Brien

Gov. Barbara O'Brien, Assistant Commissioner Ed Steinberg, and students from the L.E.A.D. Program at Cheyenne Mountain High School.



Ed Steinberg, Michael Merrifield
and Lynne Fitzhugh

825 E. Pikes Peak Ave.
Colorado Springs, CO 80903
719.227.0026
<http://thedyslexiacenter.com>



Camryn, Age 7



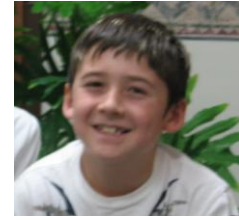
Kendell, Age 10, with her mother and Dr. Fitzhugh



Chase, Age 9



Sam, Age 8



Matthew, Age 10

TDC is extremely proud to announce that Executive Director Lynne Fitzhugh has been elected to the Board of Directors of the International Dyslexia Association (IDA), a group comprised of leaders in the field of reading research and dyslexia.

Finally, we are extremely grateful to the community, both individuals and foundations, for their support of The Dyslexia Center. First and foremost, we are grateful to the Penrose St. Francis Health Foundation for its continued support of our operations, and to Penrose–St. Francis Hospital for the space in which we work. We are able to serve the community because of their generosity. We also sincerely thank the following groups for their financial and/or in-kind support:

The Joseph Henry Edmondson Foundation
The Luther T. McCauley Charitable Trust
The John G. Duncan Charitable Trust
The Wells Fargo Community Assistance Fund
Pikes Peak Community Foundation

El Pomar Foundation
US Bank
The Giddings Foundation
Colorado Springs Utilities
The Gazette

We also thank the community for helping us meet our goal of matching a \$5,000 challenge grant from the Pikes Peak Community Foundation. Thank you, Colorado Springs, for your continued support of The Dyslexia Center. With your help, we are making a difference in the lives of many students with dyslexia!

Lynne Fitzhugh, Ph.D., CALT
Executive Director

Patty Daily, CALT
Certified Academic Language Therapist

Jill Yochim, M.A., AALT
Reading Intervention Specialist

Raye Lynne Dippel, Ph.D.
Psychologist

Theresa Gisi, Ph.D., NCSF
Neuropsychologist

Cathy Daly, M.A.
Office Manager

Board of Directors

Robert Durham, Ph.D., Chair; Jan McCauley, Vice–Chair;
Dolly Wong Kast, Treasurer; Kristel Hybl, Secretary;
Phil DeVries; Peggy Littleton; Bruce MacHaffie, M.D.; Charlotte Mendoza, Ed.D.;
Teresa O’Connell; Christy Brown Walsh